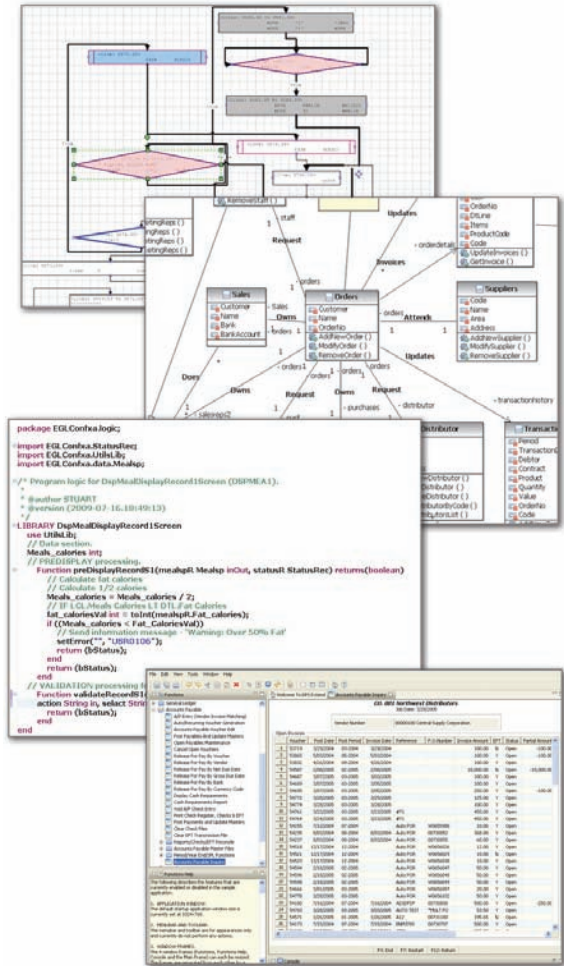
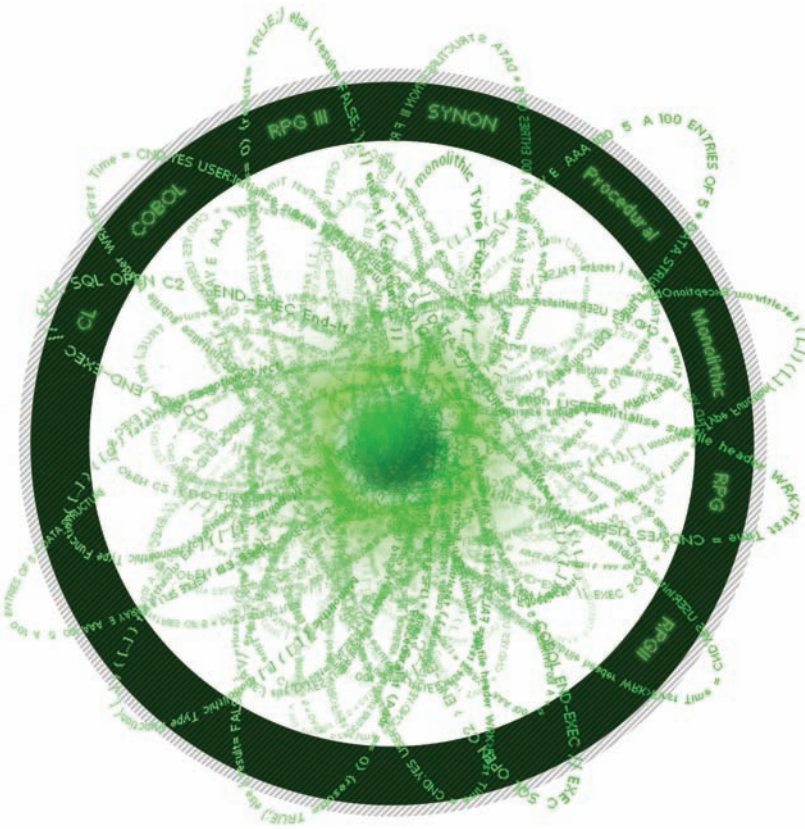


LEGACY MODERNIZATION

FROM THIS

TO THIS



X-ANALYSIS

APPLICATION DISCOVERY, ANALYSIS AND DOCUMENTATION FOR RPG/COBOL/CA2E/JAVA/VB/POWERBUILDER

X-REDO

AUTO-BUILD COMPLETE SPECIFICATIONS OF YOUR LEGACY APPLICATIONS IN PDF, WORD, UML, XML, JAVA,

TAKE THE EXPRESSWAY TO MODERNIZATION WITH DATABOROUGH'S TOOLS

Understanding and sharing the design of your entire existing system is the first step in any enhancement process. Extract the true value from your legacy applications with knowledge, understanding and reengineering technologies.

NOW AVAILABLE FULLY INTEGRATED WITH ECLIPSE , WDSr/RDi and RATIONAL COMPLETE WITH UML GENERATION AND ANALYSIS OF LEGACY USAGE WITHIN JAVA AND VB

www.databorough.com
info@databorough.com
North America: 705.458.8672
Worldwide: 44 1932 848564

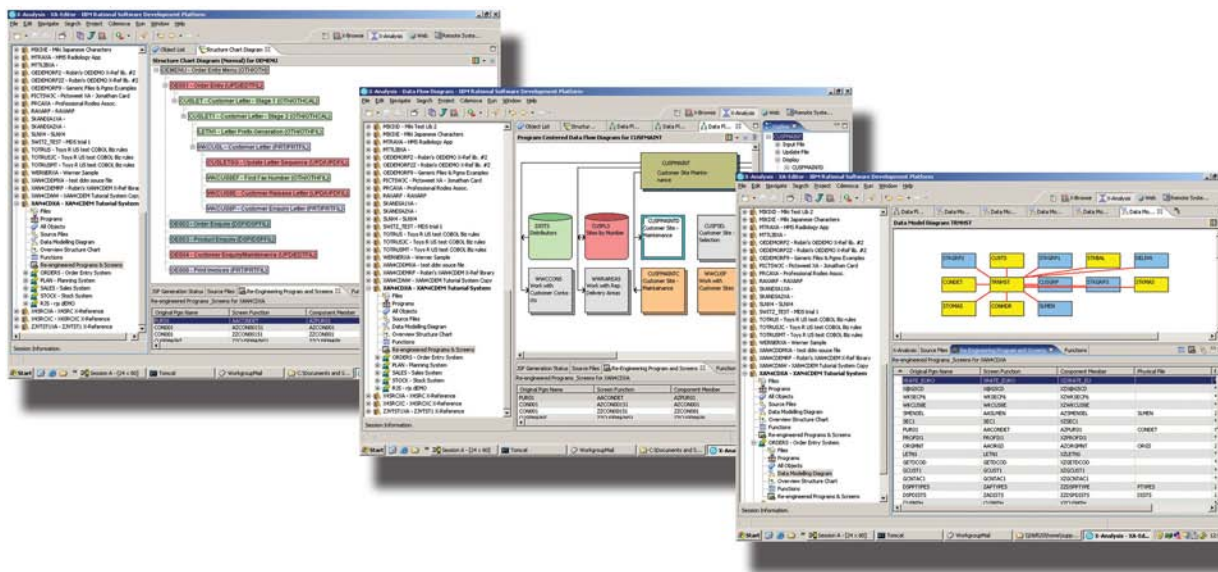
Sign-up at databorough.com to try X-Analysis over your own system FREE for 30 days.

 **Databorough**
Managing complexity with ease



X-Analysis Overview

X-Analysis is a proven world leading tool used by analysts, developers, architects and operations teams for the analysis, documentation, modernization, and rebuilding of IBM i applications. It provides detailed analysis and interactive diagrammatic constructs that enable rich understanding of existing applications, whether they were developed yesterday, or 30 years ago. It is also has a series of powerful reengineering facilities for automated database and application modernization, which are integrated with the analysis and design extraction functions.



Developing tools services for analyzing and reengineering RPG applications for the last 20 years, has given Databorough a unique view of the very large and complex world of legacy applications running on IBM i.

The knowledge and information contained in an organization's business software is vitally important and extremely valuable but often this information covering the operation, metrics, and design of the software is tantalizingly out of reach. Without this knowledge, maintenance and changes to the system are not as efficient or effective as they could be, and the risk of failure or problems increases exponentially the larger the enhancement required. This could lead to a paralysis where changes can't be made due to a lack of confidence in the outcome.

Accurate and current information about an entire system can greatly improve the productivity of your IT staff, and reduce maintenance costs by eliminating the need to research, catalog and assemble the information manually for each service request, or modernization project.

From even the most poorly structured application, the X-Analysis can recover the design logic. Whereas, for more structured applications (e.g. Synon/2E generated applications), X-Analysis can directly extract the details of the existing model, providing an excellent base for efficient and effective design recovery.

X-Analysis is a suite of modules now fully integrated with WDSi/RDi and MyEclipseBlue, as well as running standalone on Eclipse without any other product dependencies. Individual modules are grouped together to provide useful solution sets that meet a number of requirements around a central theme. Details on these solution sets can be found on our website at www.databorough.com

X-Analysis Provides

- Variable level cross-referencing drilling down through multiple layers or variables and programs/files/screens (RPGII/400/LE/FREE, COBOL36/400/LE , CL, SQL)
- Interactive source code browser
- Interactive structure chart diagrams
- Interactive data flow diagrams
- Object where used
- Procedures where used
- Plug-in to Eclipse or WDS/MyEclipseBlue

X-Documenter Provides

- Subdivide system into application areas and embed into other application areas
- Application Area Diagrams
- Restrict diagrams or show the objects that belong to an application area only.
- MS Word project/static documentation wizard
- Visio exports for graphical diagrams
- Subroutine layering diagrams
- Link to SEU or CODE/400 and LPEX editors
- Indented source code views
- Screen design and report layouts at a glance
- Program understanding at an application level, rather than a complete system level.
- All other modules have use of application level control as opposed to entire system level functionality
- Object Annotation repository or Word Doc based
- MS Word / Excel exports of all Lists and graphical diagrams.

X-Rev Provides

- Automated generation of data model from RPG/COBOL/SYNON
- Entity relationship diagrams
- Data encyclopedia
- Builds Interactive, ready-to-use, drill-down application over legacy system
- Instant & Automated Structured, drill-down browsing of test/live data during
- Browsing and analysis of data dictionary

X-Rules Provides

- Identifies and documents business rule logic from legacy RPG
- Analysis and cross referencing of business rule logic in legacy RPG
- Individual Business Rule Annotation
- Business Rule Where Used & Summaries
- Business Rule Database
- Business Rule Exports to MS Word and EXCEL
- Export of DDL from relational data model.
- Screen Flow Diagrams
- RPG & COBOL data flow charts
- RPG & COBOL source viewed as Pseudo code (Structured English with field texts)
- Source leveling (summarization of source members) by source line type

X-Redo Provides

- Creates Business Rule Model from recovered business rule logic
- Creates Transaction Model from screens, I/O, program actions/options, DB Model
- Export of UML Class Diagrams from relational data model
- Generation of UML Activity Diagrams
- Generation of UML Use Case Diagrams
- Fully automated and integrated documentation with X-Analysis.
- Can be used over user defined application areas or individual programs
- Generates new projects in IDE's such as MyEclipseBlue or Rational/WDS
- MVC generation from recovered designs as JSF/Java or JSF/EGL
- Generates source objects from recovered Business Rule Logic & integrates with JSF's
- Reuses existing stored procedures & assists in creating new SP's
- Creates Hibernate configuration files from recovered relational model
- Web Service Generation
- Compare Original and Recovered code
- Export business rules, data model & UI Meta Data as XML

X-Modernize

- DDS to SQL Database Conversion
- Copies production data into new database
- Creates stateless CRUD Service Programs
- Automated Subroutine to Procedure Conversion

X-Jref

- Cross references & documents Java, VB/VB.Net & PowerBuilder
- Builds standalone PC based X-Analysis repository
- Share with IBM i repository
- Multi-user shared repository across LAN

X-Resize Provides

- Automated field expansion conversions
- Decimal position conversions
- Instant & Detailed impact analysis for all instances: Fields, variables, programs, displays, reports, including aliases.
- Integrated project control documentation with X-Analysis
- Integrated change control with X-Control
- Totally automated source conversion for all object/source types
- Automated Bulk recompile
- Automated data conversions
- Exception reports for overlays and other problems
- Merge converted source and objects back into primary libraries
- Optional UNICODE conversion features (additional cost)

X-Audit

- Problem Analysis for design oddities, such as
 - Database file has constraints defined
 - Duplicate Logical files
 - Database file has FIFO/LIFO keywords in source
 - Source has changed after file was created
 - Joined logical files
 - Database file is journaled
 - Database files with multiple record formats
 - Database files with multiple members
 - No database file for an existing source member
 - No source for existing Database file
 - Database files with no members
 - No program object for an existing program source
 - No source member for program object
 - Source member changed after program object created
 - References to Un-included Files Display
 - Database file has Select/Omit rules defined
 - Database file has triggers defined
 - Un-migrated Logic
 - Unused Logical files
- Metrics – low, medium and high complexity classification of programs based upon each programs number of:
 - Source Lines
 - Files
 - Printer files
 - Called Programs
 - Calling Programs
 - Screens
 - Sub-files
 - Copybooks
- Audit Report – MS Word or PDF wizard generates structured reports of metrics and problem analysis results

X-WebQuery Provides

- Unlimited users per server License
- Builds DB2 Web Query meta-data automatically
- Includes relational information between files/tables in meta-data
- Identifies total-capable fields plus all key structures
- Builds entire set of standard queries over database
- Incorporates descriptors into queries using relational information
- Uses relational information for drill down inquiries
- Instant OLAP add-ons
- Advanced Legacy Inquiry Program and Model extraction Add-ons
- Date field and their formats Add-ons

X-Data

- X-Subset – Creates complete test data subsets from live data based upon existing application data model.
- X-Verify – Verifies and reports on referential integrity of entire live data based upon existing application data model.
- X-Warp – ages dates forwards and backwards, days, months or years
- X-Sanitize – scrambles sensitive data while retaining integrity of special formats such as telephone numbers, names Zip/Post codes etc.

X-Compare

- Difference Analysis and design level rather than just source code lines
 - Compare business rules
 - Compare database designs
 - Compare database relations
- Link multiple repositories

Trial X-Analysis over your own system for 30 days for **FREE** and see for yourself

For more details
See our website
www.databorough.com